



XRH222 Universal inspection cabinet



VisiConsult
X-ray Systems & Solutions

Robust and reliable industrial design

Computed Tomography (CT) ready

Automated Defect Recognition (ADR)

Compliance to international standards

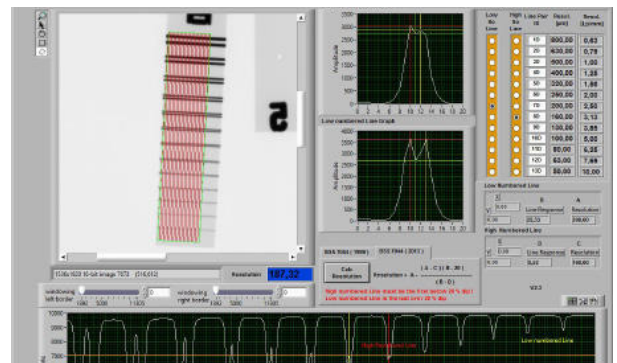
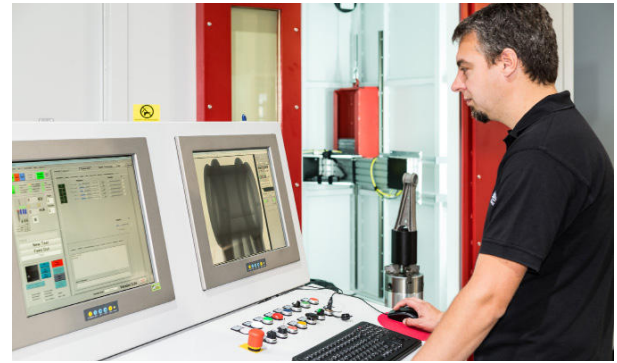
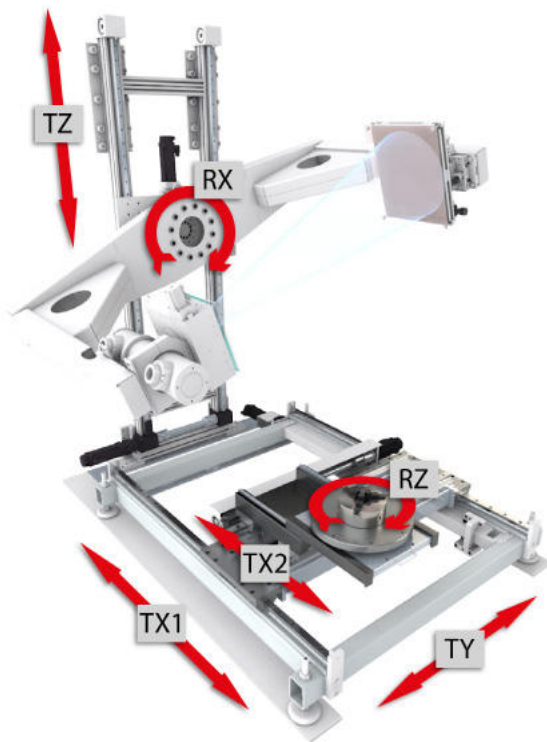
Extensive image archiving incl. DICOM



XRH222 – The versatile inspection cabinet

The XRH222 is a universal X-ray inspection cabinet with dozens of successful installations worldwide. In times of high quality requirements and mixed production manufacturers need versatile inspection equipment to fulfill the demanding quality standards while maintaining the throughput. The system combines a big part envelop with intuitive visual inspection, advanced 3D Computed Tomography (CT) analyses, Automated Defect Recognition (ADR), real-time live inspection, process automation, decision assistance and many more.

This results in an unmatched flexibility and allows the system to be used production and lab environments for many different applications like casting, composite, welding, electronics, aerospace parts and many more. Available with 160, 225, 320 and 450 kV.



Modular design and high quality

To provide the best inspection results VisiConsult supplies a broad variety of X-ray equipment. Tube and detector can be freely combined depending on customer preferences or application requirements. Customers get a comprehensive suggestion based on complex case studies. The system is available in a standard version, XL version for bigger parts and an S version in case of limited space. In case of very heavy parts please refer to the top loader version, which is not included in this brochure. The cabinet is certified by the German TÜV and CE, which ensures absolute safety, no X-ray leakage, fulfillment of all common standards and an ergonomic operator position. The robust industrial design, developed and produced in Germany, guarantee a long lifetime and low downtimes even in demanding conditions.



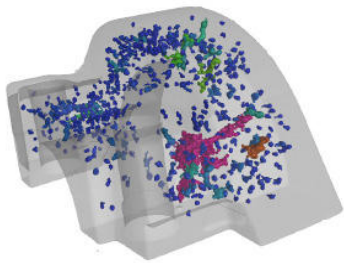
Due to its flexibility the XRH222 is the perfect all-rounder. Switching between Automated Defect Recognition (ADR), 3D-CT laboratory inspection or manual testing is done effortlessly in seconds. This leads to an increased system utilization and saves investment costs for multiple inspection systems.

The operator just loads a defined parameter set and the system is ready for the new task. In day to day business simplicity and efficiency is the key to success.

Advanced 3D inspection through CT

Computed Tomography (CT) is a powerful tool for Research and Development departments that need to know exact error positions, size or shape. A typical application is the detection of porosities in casting parts during the development of new casting processes. The focus of the XRH222 is to deliver results in a feasible time, therefore our in-house developed QUICKscan delivers reliable results in just a few minutes.

To help our customers to stay one step ahead of competition VisiConsult developed an economical in-line CT functionality that also allows a seamless integration to our ADR. Typical checks are porosity analysis and actual-nominal comparison.



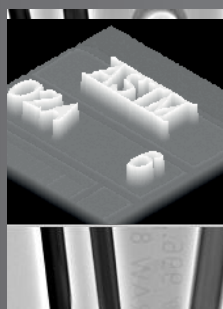
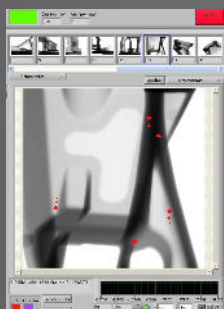
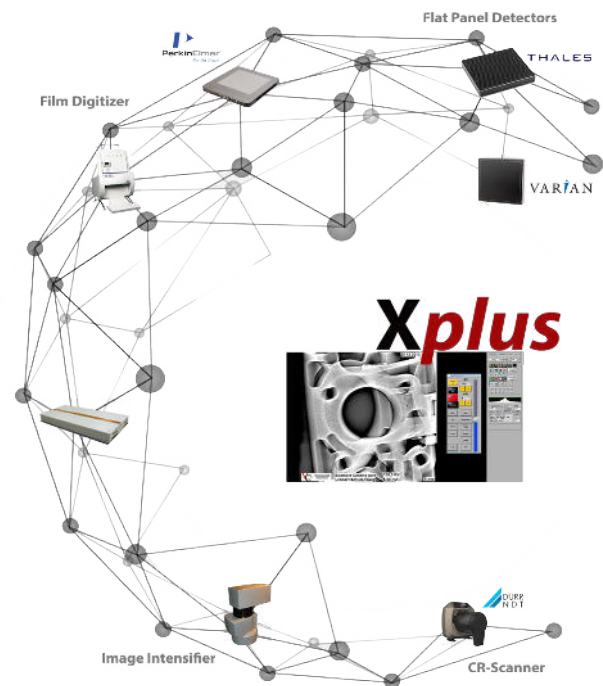
ADR for automated inspection

The XRH222 can also be used for high volume inspection by adding the Automated Defect Recognition (ADR) module. Several automation levels from assisted inspection up to a completely automated process with robots are available. This entitles the system for 24/7 inspection without any downtimes and operators. Even complex tasks like measurement jobs, completeness checks, fitting control and many more can be solved by our in-house developed XplusVAIP (VisiConsult Automated Image Processing). The VisiConsult ADR has many reference installations worldwide and is certified by renown companies in the automotive industry.

Xplus – Discover the Invisible

The core of the system is our in-house developed image enhancement system Xplus that sets new industry standards. Constant development and 25 years of experience combined with a maximum flexibility towards special process requirements help our customers to be a step ahead! Advanced features like overlay tools, macro generators, filter builders, live image enhancement, report toolkits, DICONDE integration, measurement tools and many more make the Xplus the most sophisticated software on the market.

It fulfills all major international industry standards like ASTM, EN17636-2, Boeing 7042/44, NADCAP and many more. VisiConsult is a highly agile and flexible solution provider. Therefore, special software or even hardware requirements can be easily implemented on customer demand!



To find even the tiniest failures in test-parts our renowned image enhancement system Xplus has a broad portfolio of enhancement features to deliver sharp and noise-reduced images.

A combination of real-time noise reduction (MotionDetect) and image enhancement (LiveFilters) highlights defects that were not visible for the human eye before. This results in brilliant images during live inspection, while the high dynamic range allows to look into different material thickness at the same time.

The XRH222 is a universal X-ray cabinet designed for basic visual inspection and advanced analyses like ADR and CT.

XRH222 - technical specification

	XRH222 ^S	XRH222	XRH222 ^{XL}
Max. part size (mm - Ø x height)	650 x 860	650 x 900	900 x 1500
Max. part weight (kg)	120 (60)	120 (60)	120 (60)
System size (mm L x W x H)	2900 x 2100 x 2450	2900 x 2100 x 2750	2900 x 2500 x 3300
System weight (kg)	5500	6000	8000
Console weight (kg)	175	175	175
Console size (mm L x W x H)	1200 x 950 x 1600	1200 x 950 x 1600	1200 x 950 x 1600
Energy (kV)	160, 225, 320, 450	160, 225, 320, 450	160, 225, 320, 450
Horizontal motion TX (mm)	900	900	1200
External loading TX2 (mm)	400	400	400
Magnification TY (mm)	450	450	450
Focus Detector Distance FDD (mm)	1150	1150	1450
Focus Object Distance FOD (mm)	384 - 830	384 - 830	465 - 915
Vertical motion TZ (mm)	860	920	1520
C-Arm tilt RX (deg.)	+ / - 30°	+ / - 30°	+ / - 30°
Part rotation RZ (deg.)	360° multiturn	360° multiturn	360° multiturn

Dimensions and electrical values can vary depending on X-ray equipment. Cabinet in compliance to German and international radiation law. Dimensions can be customized in case of special requirements, especially in terms of part size.

Connection values: 3N PE, 400/230 V, 50/60 Hz, 8 kW
Ambient conditions: +10° to +35°C

- Sequences, CNC axes and ADR for high throughput inspection
- Intuitive and ergonomic operation for maximum efficiency
- Extensive archiving options including full DICOM support
- Modular Computed Tomography (CT) functionality



Your VisiConsult Sales Team!



VisiConsult is a family owned company located in Northern Germany and is a specialist for customized and standard X-ray systems. All our products are developed and produced locally and delivered as turn-key solutions. This leads to cutting edge performance and a high flexibility. Our goal is to solve our customers' problems with tailored systems and guarantee a premium post-sales service.

More than 25 years of expertise in Security and classic Non Destructive Testing (NDT) markets like aerospace, automotive and many more lead to an unmatched experience in X-ray technology and result in a superior global service network.